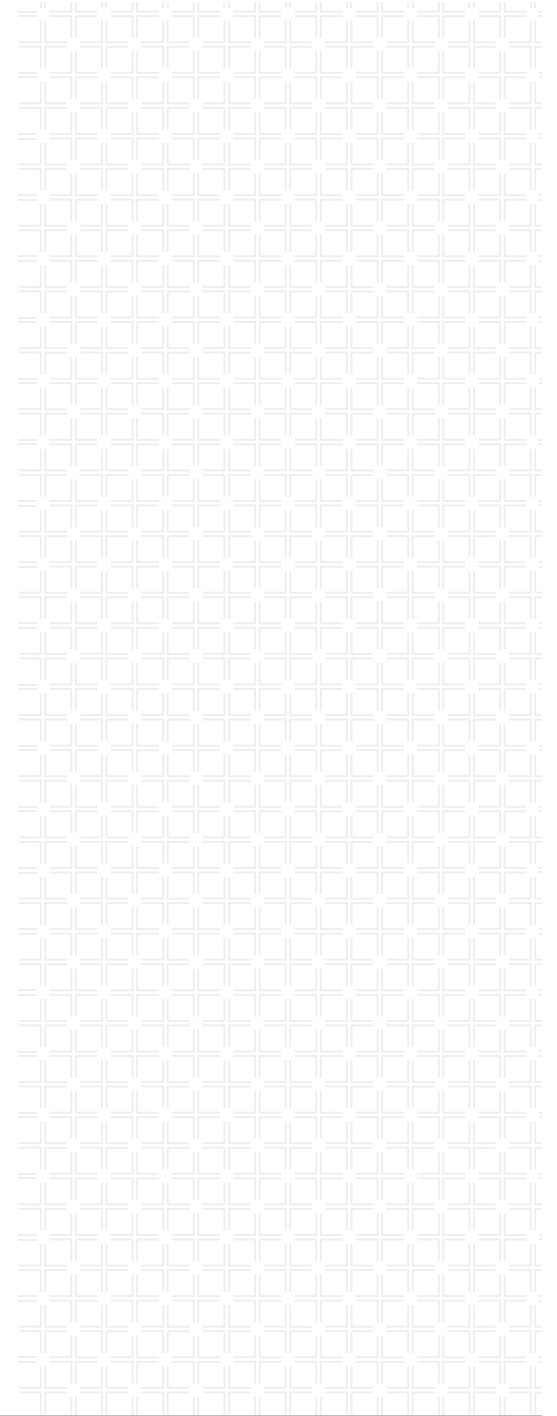


Huckabee



CHANNELVIEW INDEPENDENT SCHOOL DISTRICT

ALICE JOHNSON JR. HIGH SCHOOL

March 17, 2020

# DESIGN DEVELOPMENT PRESENTATION



ACKNOWLEDGMENTS **01**

SITE ANALYSIS **02**

OVERALL PLANS **03**

EXTERIOR PERSPECTIVES **04**

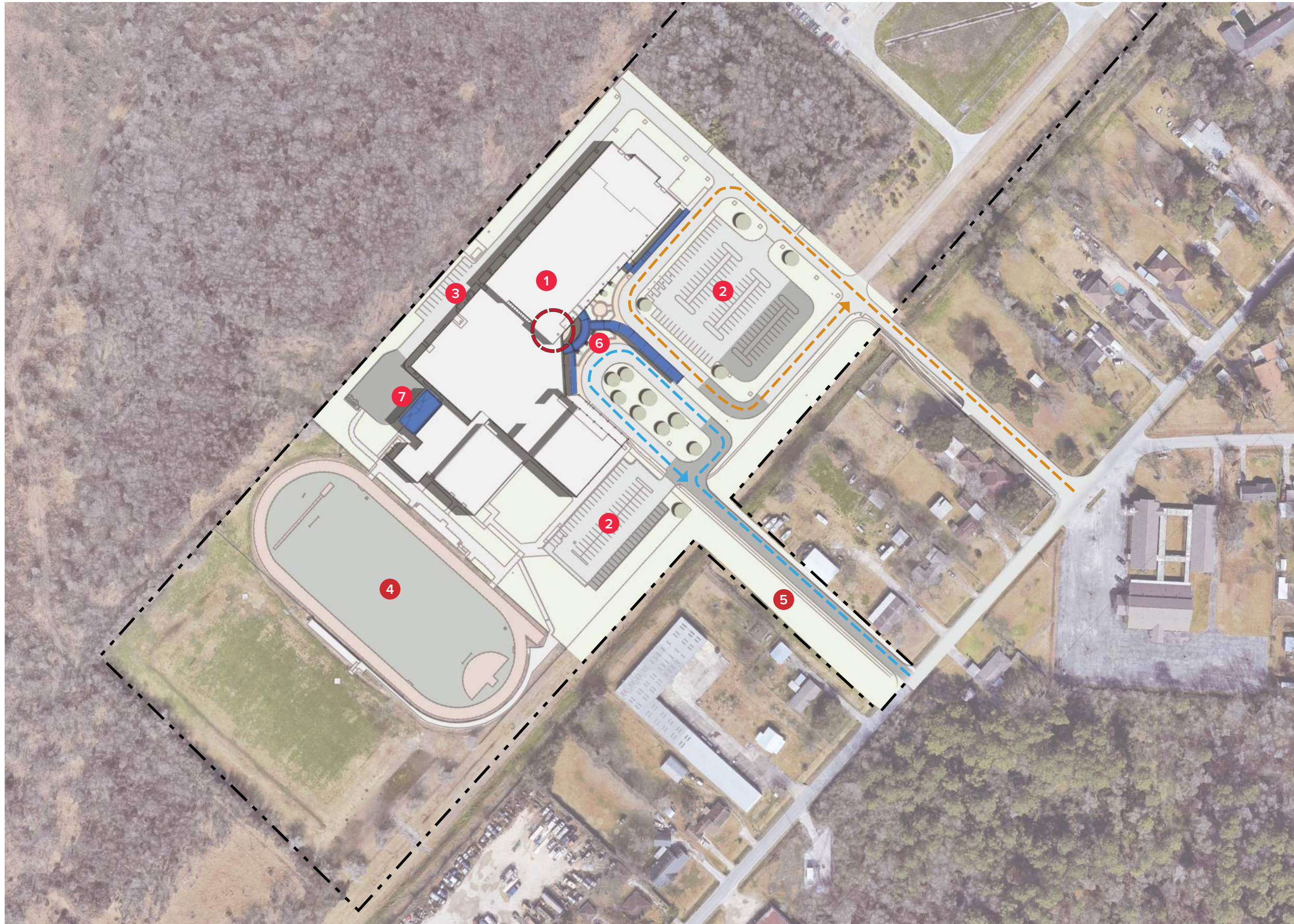
PROJECT SCHEDULE **05**





**SITE PLAN KEY**




- 1** EXISTING ALICE JOHNSON JR. HIGH SCHOOL
- 2** STAFF/VISITOR PARKING
- 3** BUS LOOP
- 4** SERVICE DRIVE
- 5** TRACK COMPLEX
- 6** PARENT DROP-OFF



**SITE PLAN KEY**

- 1 EXISTING ALICE JOHNSON JR. HIGH SCHOOL
- 2 STAFF/VISITOR PARKING
- 3 SERVICE DRIVE
- 4 TRACK COMPLEX
- 5 NEW ACCESS ROAD
- 6 EXTERIOR ENTRY IMPROVEMENTS
- 7 BAND HALL EXPANSION

**SITE PLAN LEGEND**

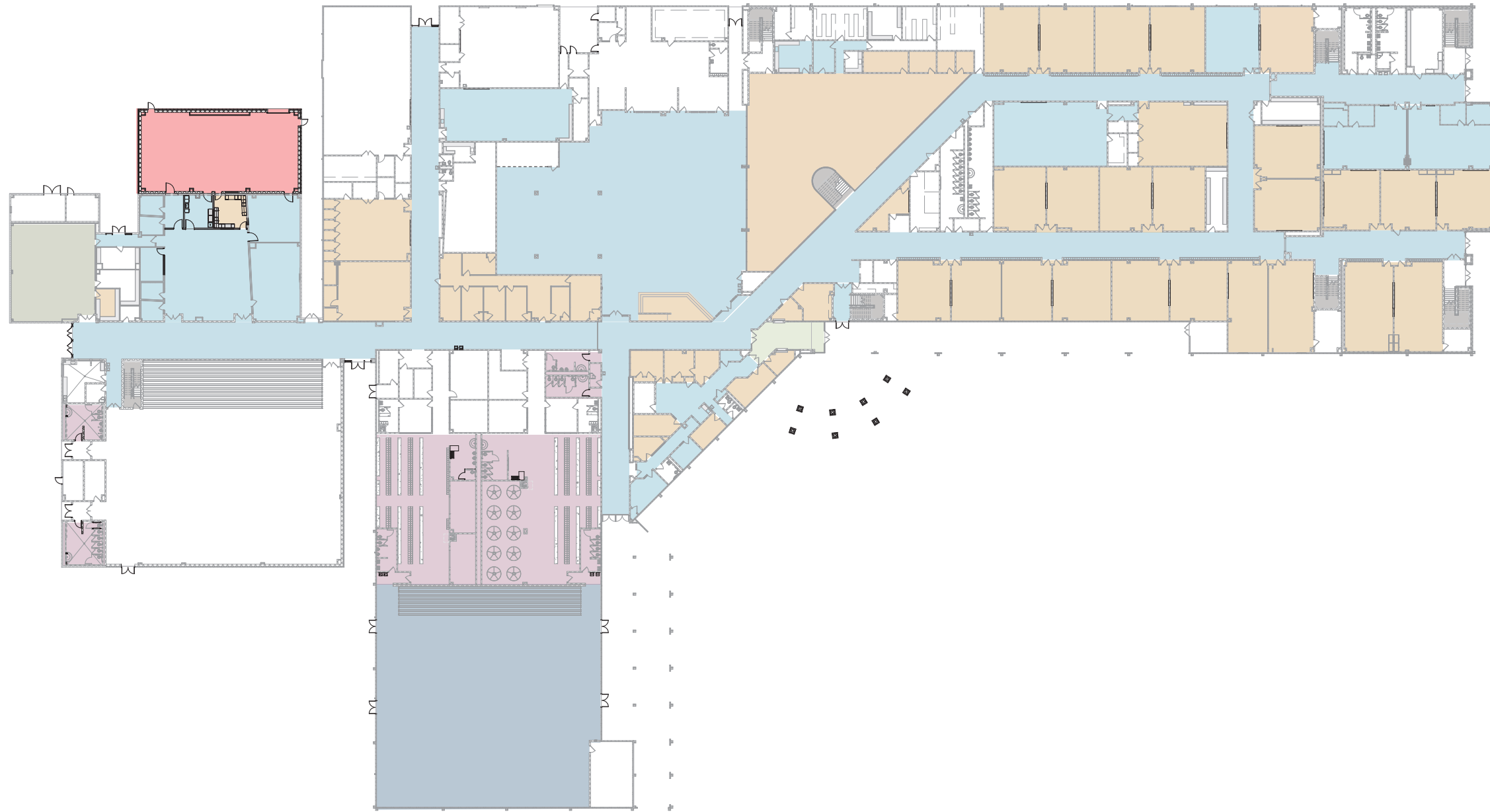
-  ENTRY
-  Parent Drop-off
-  Bus Drop-off



CHANNELVIEW INDEPENDENT SCHOOL DISTRICT  
ALICE JOHNSON JR. HIGH SCHOOL

COLOR LEGEND

- Repaint Interior
- New Carpet Flooring
- ADA/TAS Modifications as Required
- Replace Girls Gym Floor
- New LVT Flooring
- New Porcelain Tile Flooring
- Replace Treads as Required
- New Band Hall Expansion
- + Provide New PA, Bell and Clock System

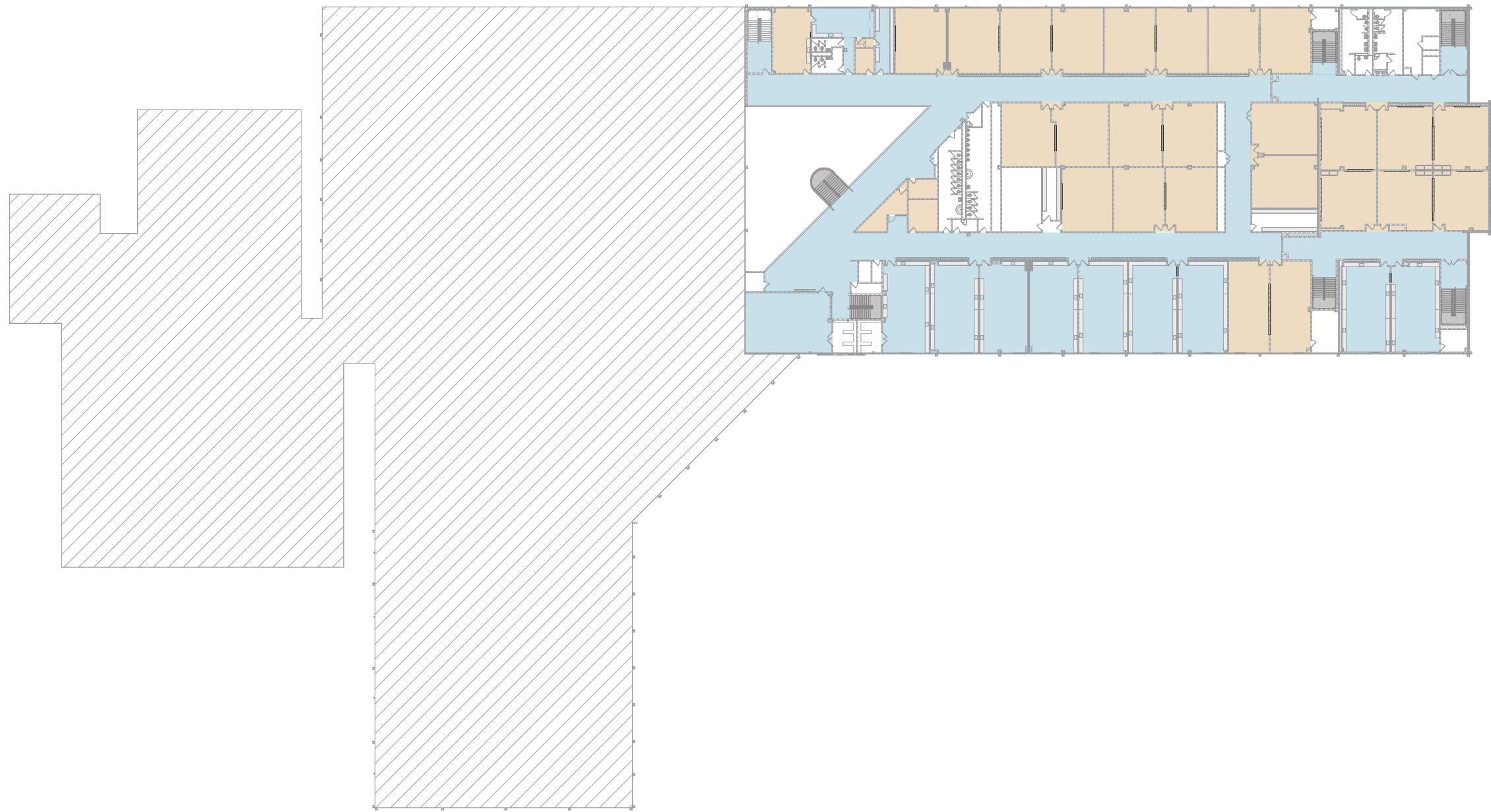


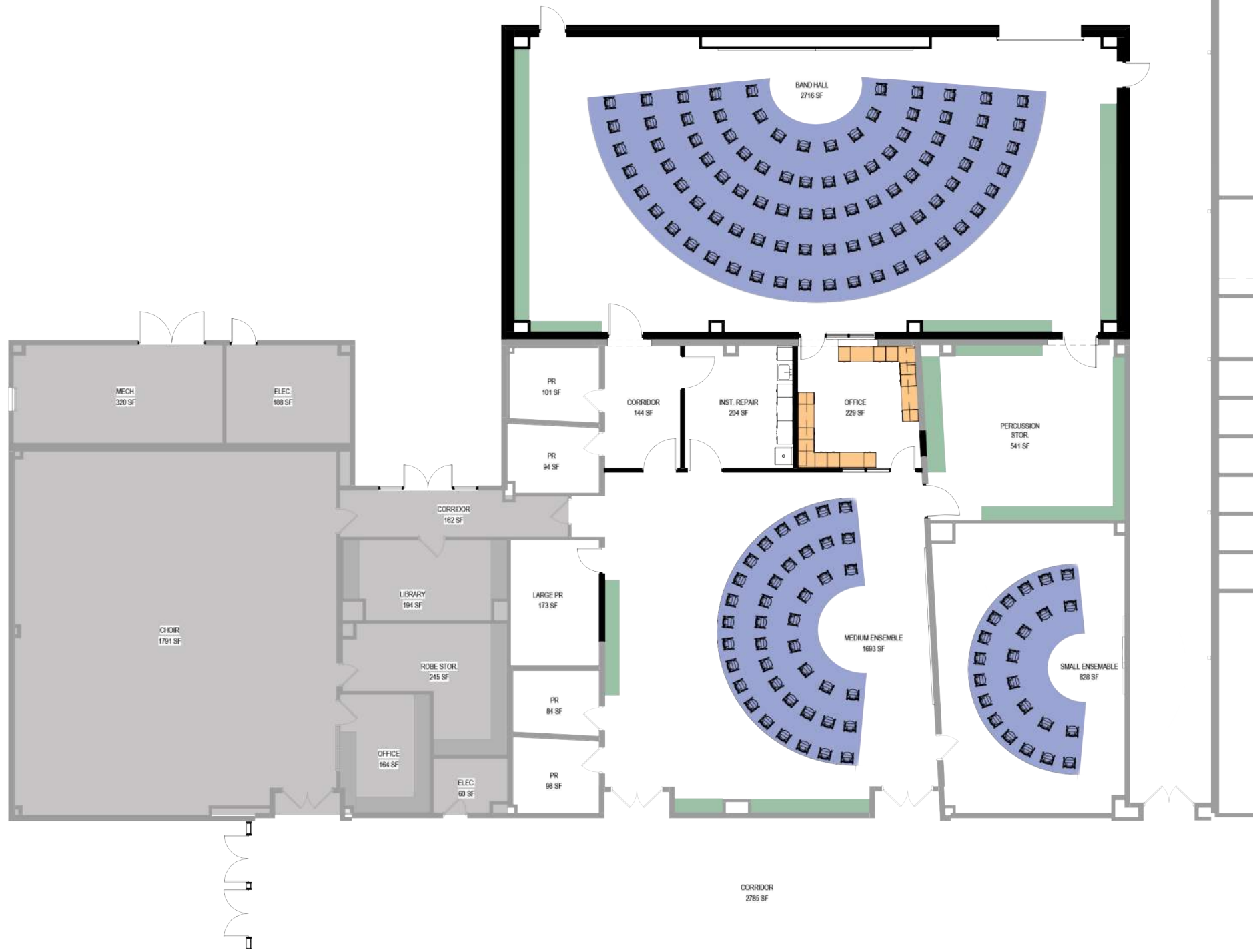


CHANNELVIEW INDEPENDENT SCHOOL DISTRICT  
ALICE JOHNSON JR. HIGH SCHOOL

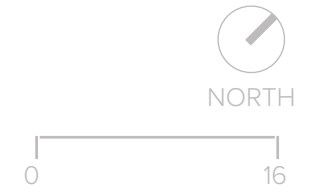
COLOR LEGEND

- Repaint Interior
- New Carpet Flooring
- ADA/TAS Modifications as Required
- Replace Girls Gym Floor
- New LVT Flooring
- New Porcelain Tile Flooring
- Replace Treads as Required
- New Band Hall Expansion
- + Provide New PA, Bell and Clock System





Alice Johnson JHS Band Hall Expansion Comparison			
		Existing	New Addition
Main Band Hall	sf	2320	2845
	capacity	75	90
Medium Ensemble	sf	N/A	1698
	capacity		55
Small Ensemble	sf	830	830
	capacity	25	25
Office	sf	170	243
	capacity	2	4
Instrument Repair	sf	N/A	200
Practice Rooms	qty	4	5
Percussion Storage	sf	150	542
Additional Library	sf	N/A	N/A
Perimeter Storage	lf	84	120







**Huckabee**

ALICE JOHNSON JR. HIGH DESIGN DEVELOPMENT

NOT FOR REGULATORY APPROVAL, PERMITTING, OR CONSTRUCTION - BRENDON HOFFMAN TX #25988  
DRAFT COPY ONLY

EXTERIOR PERSPECTIVE

04



**Huckabee**

ALICE JOHNSON JR. HIGH DESIGN DEVELOPMENT

NOT FOR REGULATORY APPROVAL, PERMITTING, OR CONSTRUCTION - BRENDON HOFFMAN TX #25988  
DRAFT COPY ONLY

EXTERIOR PERSPECTIVE

04



**Huckabee**

ALICE JOHNSON JR. HIGH DESIGN DEVELOPMENT

NOT FOR REGULATORY APPROVAL, PERMITTING, OR CONSTRUCTION - BRENDON HOFFMAN TX #25988  
DRAFT COPY ONLY

EXTERIOR PERSPECTIVE

04



**Huckabee**

ALICE JOHNSON JR. HIGH DESIGN DEVELOPMENT

NOT FOR REGULATORY APPROVAL, PERMITTING, OR CONSTRUCTION - BRENDON HOFFMAN TX #25988  
DRAFT COPY ONLY

EXTERIOR PERSPECTIVE

04



# Huckabee

ALICE JOHNSON JR. HIGH DESIGN DEVELOPMENT

NOT FOR REGULATORY APPROVAL, PERMITTING, OR CONSTRUCTION - BRENDON HOFFMAN TX #25988  
DRAFT COPY ONLY

EXTERIOR PERSPECTIVE



**Huckabee**

ALICE JOHNSON JR. HIGH DESIGN DEVELOPMENT

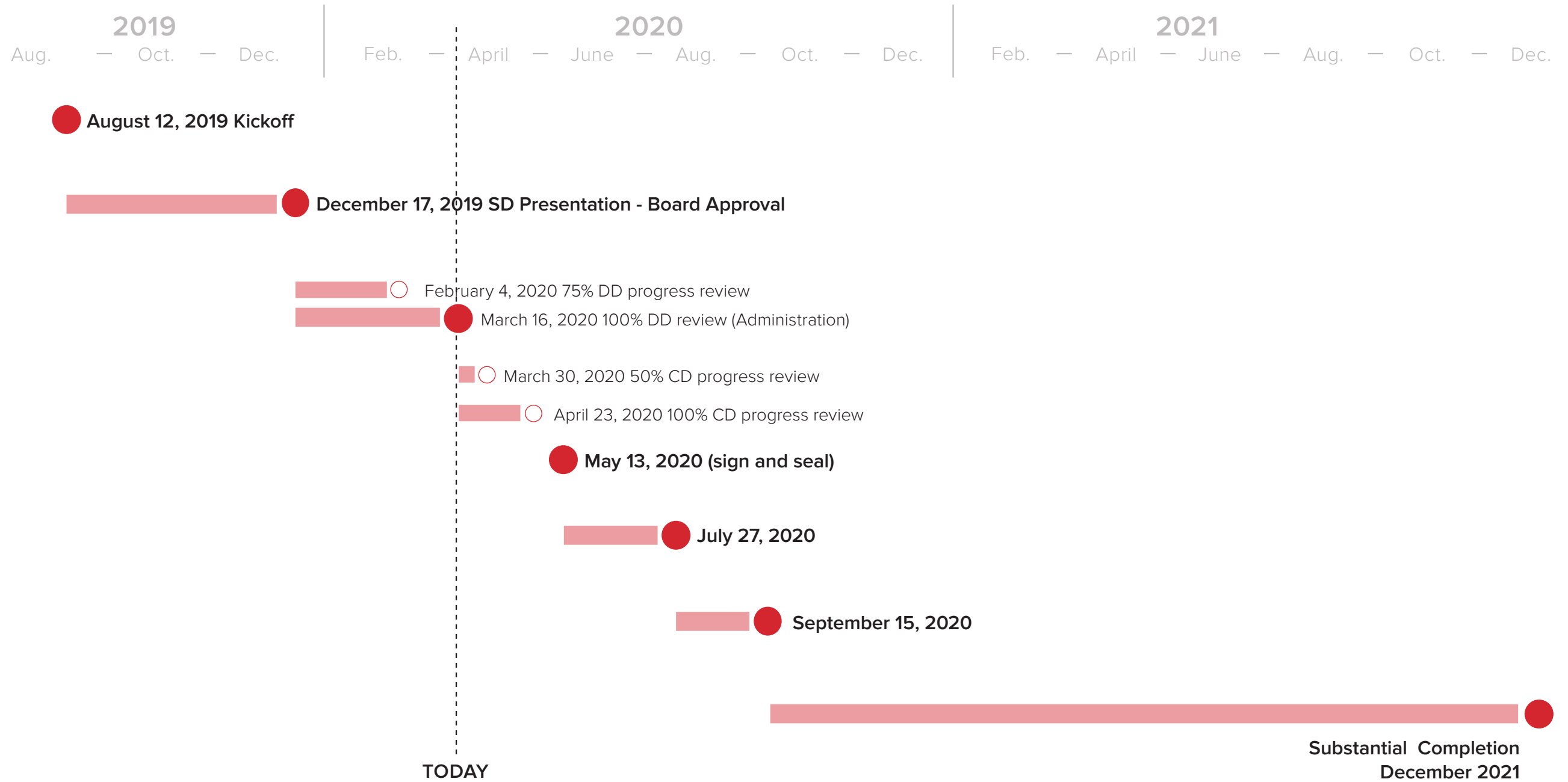
NOT FOR REGULATORY APPROVAL, PERMITTING, OR CONSTRUCTION - BRENDON HOFFMAN TX #25988  
DRAFT COPY ONLY

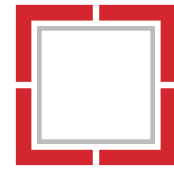
EXTERIOR PERSPECTIVE

04



PROJECT DATES
Kickoff
Schematic Design
Design Development
Construction Documents
Jurisdictional Review
Bid & Award
Construction





**MORE THAN** ARCHITECTS